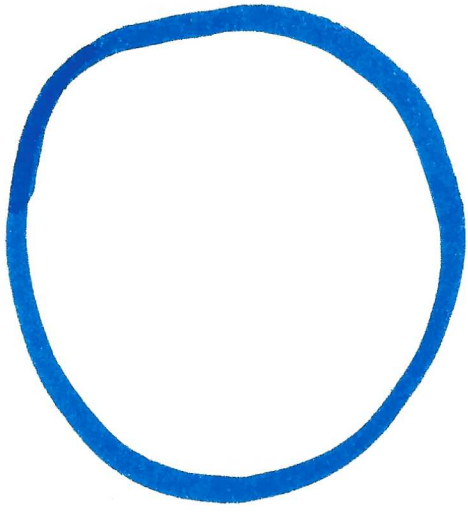


ball



B

b

This section contains two rows of handwriting practice lines. Each row consists of three vertical lines: a top blue line, a middle red dashed line, and a bottom green line. The first row is for the uppercase letter 'B'. It features a solid blue 'B' at the bottom left. To its right, there are four blue dots on the top blue line, serving as starting points for tracing. The second row is for the lowercase letter 'b'. It features a solid blue 'b' at the bottom left. To its right, there are four blue dots on the top blue line, serving as starting points for tracing.